

epitomee®

Global Scaling & Market Entry Strategy- Weight Management

*Commercial rollout, Market Entry,
Manufacturing Scale-Up and Growth*

May 2026 Investor Briefing





Company Overview



Epitomee[®] Weight Management Capsule

Commercial roll out, status, next steps
Manufacturing scale up



Summary

Management Team



Shimon Eckhouse, PhD
Co-founder and Chairman

Founder of Syneron Nasdaq:ELOS & Lumenis
Nasdaq:LMNS, Sofwave Medical TLV: SOFW and others



Dan Hashimshony, PhD
Chief Executive Officer

Founder & CEO-Dune Medical Devices
Chief Scientist X-technologies, and others



Gal Aharonowitz
COO

SHL, VP R&D Lumenis,
GM Israel
Dune medical



Yael Kenen, PhD
VP Clinical Affairs

TEVA, Global Clinical
Drug Development
Director



Gil Cohen, PhD
VP R&D

SCO Dune Medical
Devices,
Hebrew University of
Jerusalem



Maya Gabrieli, CPA
CFO

Plastopil Hazorea LTD,
KPMG



Alon Heth
VP Sales and
Marketing

VP at Human Xtensions,
Elscent , B-Cure Laser,



**Hadas Ashkenazi
Stapler**
VP Quality Assurance
and Regulatory Affairs

Ventor – Medtronic,
Keystone Hart, Implant,



Safi Landskroner
VP Business
Development

Dexcel Pharma, Mapi
Pharma,
Chartwell Pharmaceuticals

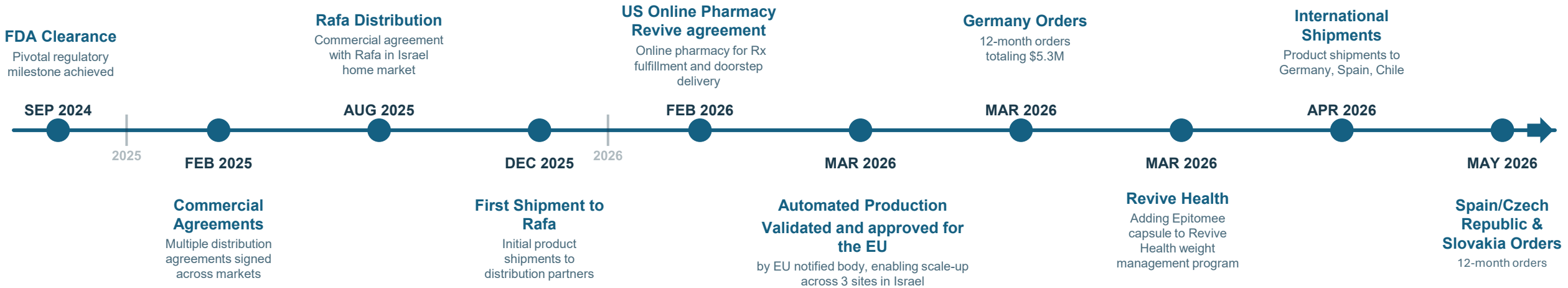
Disclaimer

This presentation (the “Presentation”) is for informational purposes only and does not constitute or form any part of any offer or solicitation to buy or subscribe for securities of Epitomee Medical Ltd. (the “Company”) and should not be regarded as a recommendation or an opinion on such matters. The information included in this Presentation is not comprehensive and does not include all the information with respect to the Company and its business required for any decision concerning an investment in the Company’s securities. This Presentation includes forecasts, estimates, assessments, expectations and other information, intent or belief pertaining to future events and/or matters, which constitute “forward-looking statements” as defined in the Securities Law 5728-1968, which is based on current expectations, projections and assumptions about future events. Actual results may differ materially due to variety of factors, some of which the Company has no control over and cannot be reasonably foreseen at this date, including, but not limited to: dependency on third parties engaged by or who contracts the Company and its services, change in the overall economy; and geopolitical events and their impact on the Company and on local and global economy, including effects and disruptions to shipping and supply chain, as well as the other risk factors detailed in Section 24 of Part A of the Company’s 2025 annual report. Such information may not materialize, in whole or in part, or may materialize in a manner significantly different to that forecast. Therefore, actual future results, performances or achievements of the Company may differ, including in a material manner, from what is or may be expressed or implied in this Presentation. Certain information and factual statements (including markets or trends) contained herein are based on or derived from publicly available documents or independent third-party sources the accuracy of such information and the assumptions on which such information is based have not been independently verified. The past performance information contained herein is not indicative of future results and there can be no assurance that the Company will achieve comparable results or that the Company will be able to implement or achieve its strategy.

Proprietary information of Epitomee Medical

Key Milestones Timeline

From FDA clearance, September 2024 to commercial rollout May 2026



MARKET TAILWIND Supportive GLP-1 market dynamics driving demand for alternative, complementary, and post-GLP-1 solutions and movement towards Telehealth and online purchasing

Favorable DATA SUPPORTING THE USE CASES OF EPITOMEE accumulative peer reviewed evidence of the safety, efficacy and health benefits of the epitomee capsule treatment

Epitomee's Strategic Focus Areas: Current Market and Pipeline

Current

Weight Management market¹: size and trends



~\$180B

Revenue, 2025
USD 176.67
Billion

Forecast, 2035
USD 392.15
Billion

CAGR, 2026-2035
8.3%

~\$400B+ by 2035

1. Based on Towards Health Care market report 2026-
<https://www.towardshealthcare.com/insights/weight-management-market-sizing>

Pipeline

Biologics Drug Market²: size and trends



~\$0.5T

Revenue, 2025
USD 487 Bn

Forecast Year, 2035
USD 1243.80
Bn

CAGR, 2026 - 2035
9.83%

~\$1T+ by 2035

2. Based on Precedence Research 2026 –
<https://www.precedenceresearch.com/biologics-market>

Note: Market size estimates vary significantly depending on source and what is included in each assessment. Multiple estimations exist; the figures in this presentation represent general trends and should be used as directional guidance only.

GLP1 Market Size Outlook

- This growth is driven by rising obesity rates, and advancements in weight management products.



ResearchAndMarkets.com, Jan 2026

Note: Market size estimates vary significantly depending on source and what is included in each assessment. Multiple estimations exist; the figures in this presentation represent general trends and should be used as directional guidance only.

The GLP1 success created the “weight maintenance” GAP; Epitomee capsule is Closing the Gap

65% of GLP1 users stop using the medication.

Post GLP1 users require weight maintenance.



JAMA Network Open, 2025

The -GLP-1 Reality: High Regain & High Discontinuation



65%

**Discontinue GLP-1s
within 12 months**

*JAMA Network Open,
2025*



2/3

**Quick Weight regain
after stopping**

Wegovy.com



1:2

**Side Effects
Short & long term**

Black Box warning

*Adverse Effects of GLP-1 Receptor
Agonists
Theodosios D. Filippatos, Thalia V.
Panagiotopoulou, and Moses S. Elisaf.*

Target Patient Segments

Patients seeking long-term, side-effect-free alternatives post GLP-1 therapy



Post GLP-1

Successful users seeking a long-term exit strategy
Early-exit users seeking side-effect-free alternatives



GLP-1 Adverse

Intolerance, contraindications, or comorbidities that rule out GLP-1 therapy

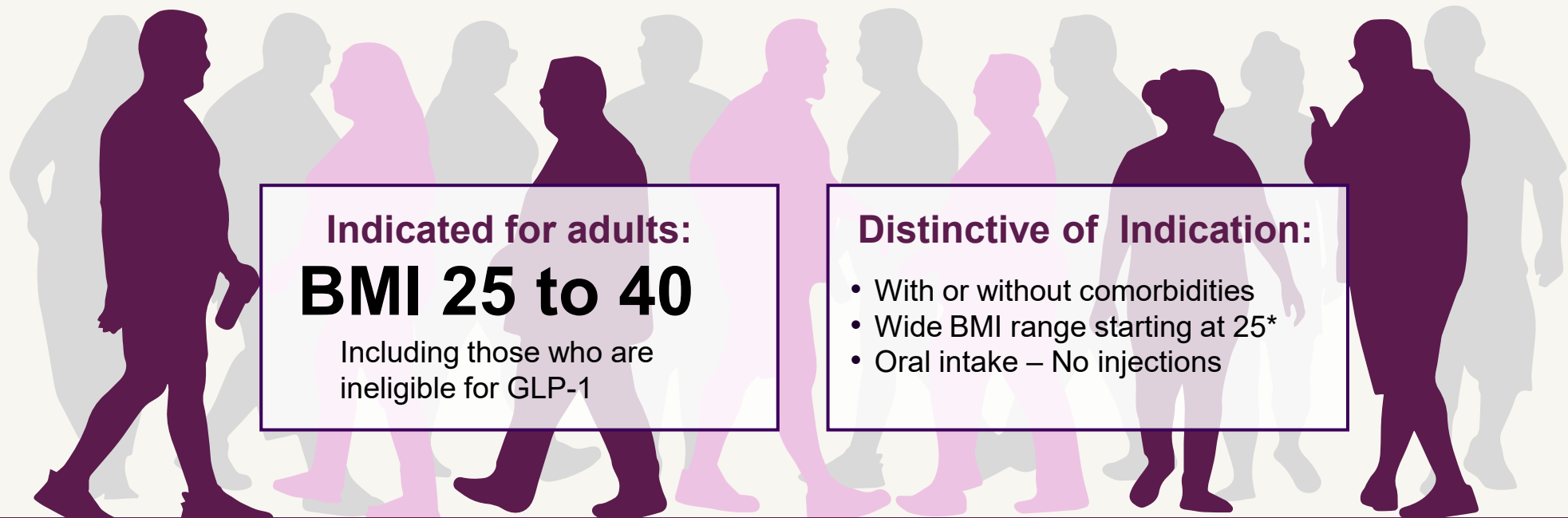


Health Conscious BMI 25–27

Concerns over side effects, long-term safety risks, or injection requirements

Epitomee[®]: An Alternative for a Wider Audience

Epitomee[®] capsule is an Rx medical device offering weight management solution for individuals with a BMI 25 to 40 (with/without co-morbidities), alongside diet and exercise.



Indicated for adults:
BMI 25 to 40

Including those who are ineligible for GLP-1

Distinctive of Indication:

- With or without comorbidities
- Wide BMI range starting at 25*
- Oral intake – No injections

Epitomee[®] capsule, a Drug Free treatment, is highly suitable for patients who are risk averse, or do not qualify for medications

epitomee[®] *As highlighted in our 2025 Annual Report, the company holds a competitive advantage within the 25-27 BMI range

The Epitomee[®] Capsule



The Product and Packaging – 4 Weeks treatment box




Epitomee® Capsule

A non-drug, clinically supported capsule that by expanding in the stomach, helping users feel full, eat less, and stay on track

- ✓ FDA-cleared, CE and AMAR-approved , Rx medical device
- ✓ Drug-free, hormone-free and no injection
- ✓ Integrates seamlessly into diet & exercise routines^{1,2}

x2 **Dosing:** Take one capsule, twice daily, with two cups of water (8 ounces or 250 ml), ~30 minutes before lunch and dinner

 **Program:** The Epitomee® capsule is indicated for use alongside diet and physical activity



Introducing a Novel Weight Management Modality

Today's standard of care



Gastric Balloons or Lap-Bands

Clinical insertion procedure
and/or
side effects



GLP-1 Injections

Hormonelike injection to
blood stream, strong side
effects and warning,
weight regain when
stopping



GLP-1 Pills

Less effective than
Injection, with side effects
and warnings like those of
the injections, long term
dependence

A proven, safe, drug-free alternative



The Epitomee® Capsule

Promotes fullness & satiety, no side
effects*, drug-free, clinically
proven, predictable weight
management

*Compared to placebo

The Growing Landscape of Supporting Epitomee's Efficacy and Health Benefits

Accumulation of Multiple Peer-Reviewed Clinical Publications

The collage features several key articles:

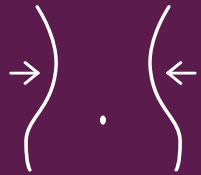
- Obesity Pillars**: "The safety and efficacy of extended use of an oral shape-shifting superabsorbent hydrogel capsule for weight loss: The ELECT extension study" by Mohe Kazar, Donna H. Ryan, Sharon Leonard, et al.
- International Journal of Obesity**: "Quality of life improvements associated with weight loss using a novel shape-shifting hydrogel capsule: RESET study results" by Robert E. Kushner, et al.
- Clinical Obesity**: "Association of the Early Response to an Oral Shape-Shifting Superabsorbent Hydrogel Capsule With Weight Loss" by John M. Jakicic, et al.
- Obesity Pillars**: "Effects of an oral biodegradable device used for 12 weeks on weight reduction, cardiovascular risk factors, satiety, snacking, and meal size" by Heim Shinar, et al.
- Obesity Science & Practice**: "Safety, tolerability and efficacy of a novel self-use biodegradable device for management of obesity" by H. Shinar, et al.
- Diabetes Technology and Obesity Medicine**: "Approach to Weight Loss in Women Over 50 Years: RESET Study with a Shape-Shifting Capsule" by Heim Shinar, et al.
- Obesity Pillars**: "Efficacy and safety of a novel oral hydrogel capsule in adults with overweight or obesity: the pivotal randomized RESET study" by Jany D. Ard, et al.



Additional Epitomee® Health Benefits in Peer-Reviewed Literature



Early response³



Waistline reduction^{5,2}



Weight management¹⁻⁶



Improved Quality of life⁴



Improvement Metabolic syndrome²



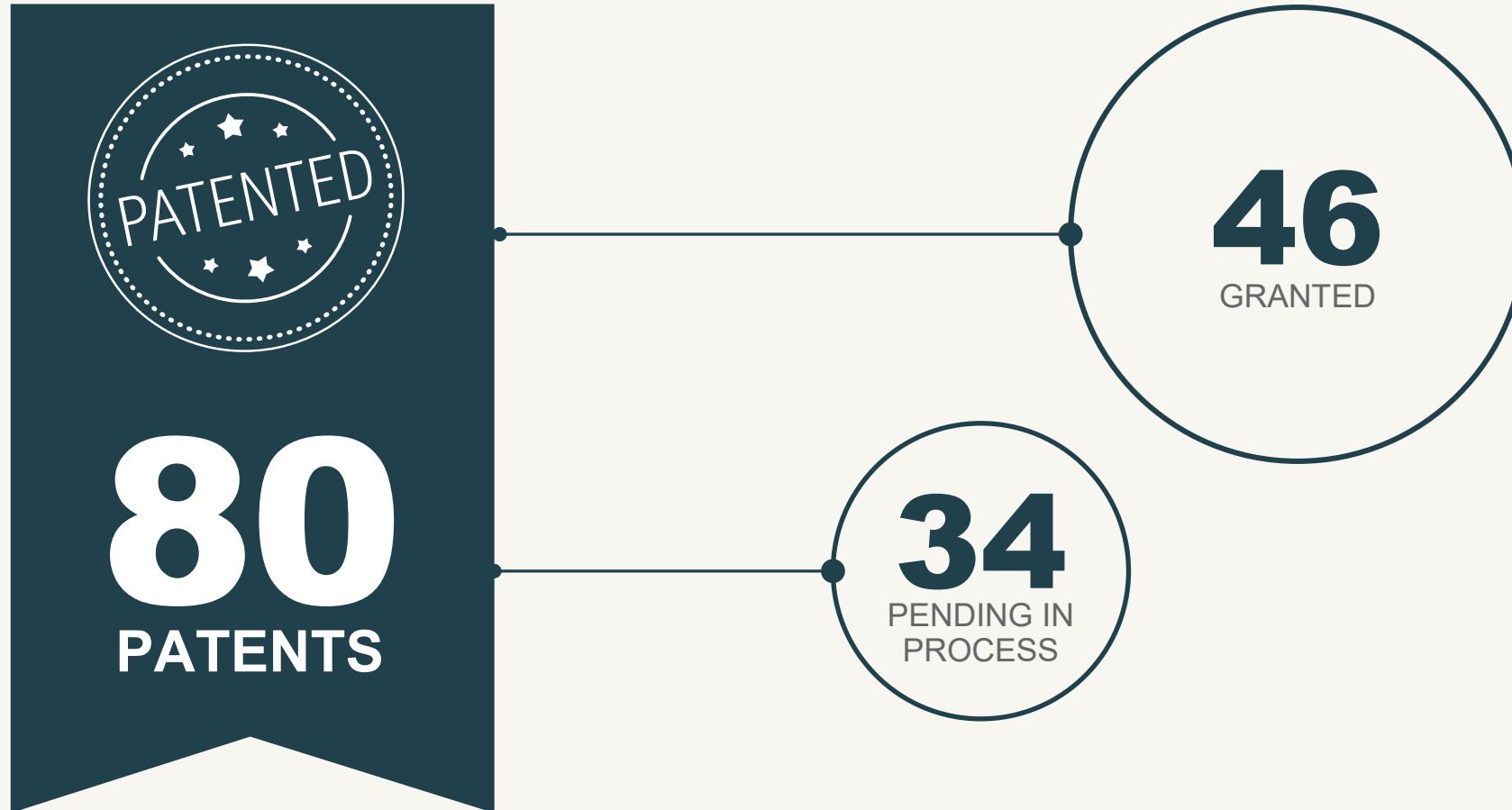
Improvements in cardiometabolic risk factors²



Safe & drug free¹⁻⁶

1. **Ard JD, Ryan DH, O'Neil PM, et al.** Efficacy and safety of a novel oral hydrogel capsule in adults with overweight or obesity: the pivotal randomized RESET study. *Obesity (Silver Spring)*. 2025;1–12.
2. **Bays HE, et al.** Cardiometabolic risk factors associated with oral hydrogel capsule use. *Obesity Pillars*. 2025;13:100163.
3. **Jakicic JM, Ryan DH, Ard JD, et al.** Association of the early response to an oral shape-shifting superabsorbent hydrogel capsule with weight loss. *Clinical Obesity*. 2025.
4. **Kusnier L, et al.** Quality of life outcomes with oral hydrogel capsule treatment. *International Journal of Obesity*. 2025.
5. **Kamar M, Ryan DH, Leonard S, et al.** The safety and efficacy of extended use of an oral shape-shifting superabsorbent hydrogel capsule for weight loss: the ELECT extension study. *Obesity Pillars*. 2025;16:100216.
6. **Srivastava S, et al.** Efficacy and safety in women over 50 years. *Diabetes Technology and Obesity Medicine*. 2026;1(1).






IP- Multiple Patent Families, Covering the Product & Pipeline

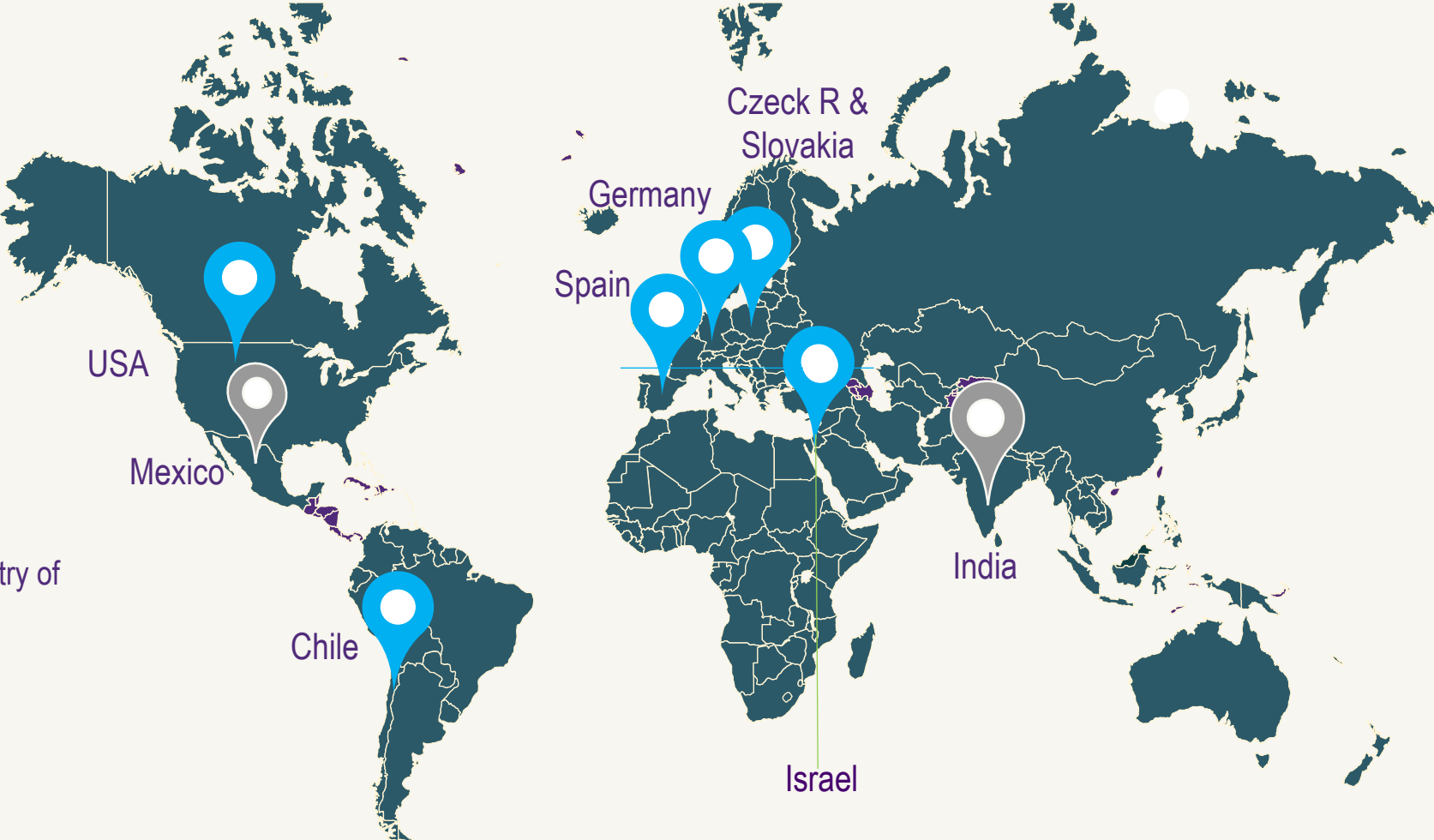


Commercial Rollout & manufacturing scale up

Epitomee's dual-track growth strategy:

In the **U.S.**, a 'click-to-doorstep' operation; and **OUS** expansion through local distributors

-  Activ territories
-  Pending registration
-  Europe – Cleared for the EU market, CE mark
-  Israel – Cleared by the ministry of health since October 2021
-  USA – Cleared



Israel: The Home-base Market

Rafa.



The Opportunity: Almost 60% of Israelis are Overweight*

63%

of Israeli men are overweight

57%

of Israeli women are overweight

80%

of diets for weight loss fail — weight regained within a year

Go-to-Market: ISRAEL — The Home-Base Market

Exclusive Distributor in Israel

Epitomee Partnered with Rafa- a pharmaceutical company and distributor, Rx and OTC, manufacturing, logistics and marketing.

Commercial Status

Pre-launch activities- First two orders delivered to Rafa-
Currently selling in pre-launch mode
Launch Q3-Q4 2026**

Operating Model

Pharmaceutical traditional distribution strategy.

Transfer price to epitomee

Distributor activities and 3rd parties

- Local pharmacy chains
- Online pharmacy
- Currently: Local conference and meeting with 4800 Family Physicians, 200 Endocrinologists

Capturing Europe's Weight Management Opportunity



\$8B+

European GLP1 market revenue (2025)

\$22B

Projected GLP1 market size by 2033

12% CAGR

Rapid growth through 2033

Our Go-to-Market Strategy

Market Approach

Localized strategies tailored to each territory in the European market

Distribution Partners

Partnering with early-adopter distributors

Operations

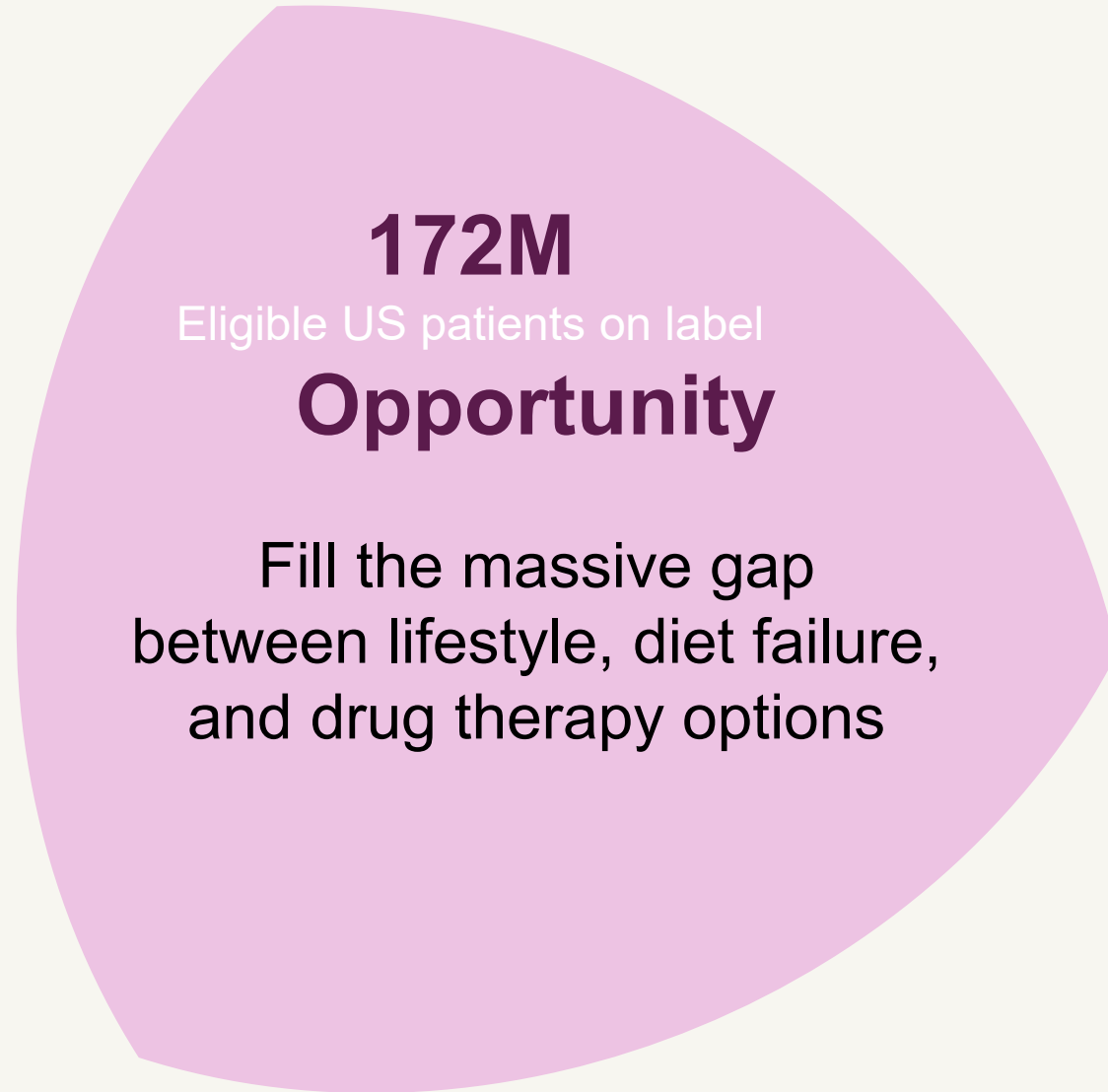
Each distributor owns his territory end-to-end:

- Marketing investment
- Logistics & supply chain
- Sales execution

Epitomee sells at transfer price

US Market Opportunity

- 1** **172M** Americans qualify for medical weight management¹
- 2** **Patients:** seeking long-term, side-effect-free alternatives post, pre, or instead of GLP-1 therapy
- 3** **HealthCare Provider (HCP):** Obesity Specialists, Primary Care Physician (PCPs), Nurse Practitioner (NPs), Endocrinologists, Weight Loss Centers, Medical Aesthetics, and Telehealth Providers.



¹CDC Report

US 1st Partnership: Revive Health



What is Revive? An integrated healthcare platform, providing health services for employers. serving 1,600+ Employers (US companies) and 4M members – (employees). Via virtual care designed for self-insured employers

Revive partnership

- ✓ Launch Q3-Q4*
- ✓ Integrating Epitome capsule into the weight program.
- ✓ Provides level of coverage for members via employers
- ✓ **Full Clinical Integration:** Prescribing, coaching, and pharmacy delivery managed via one digital dashboard.

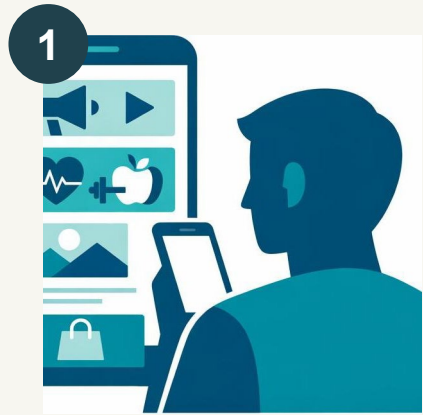
epitome[®] weight management capsule
FDA-cleared. Drug-free. Prescription-only. Clinically proven.

A new non-drug option for weight health
Epitome fills the gap between lifestyle programs and drug therapy — for the 70M+ Americans who need more support.

The advertisement features a dark teal background with white text. On the right side, there is a graphic of three concentric white circles with a small yellow dot in the center. The text is arranged in a clean, modern layout.

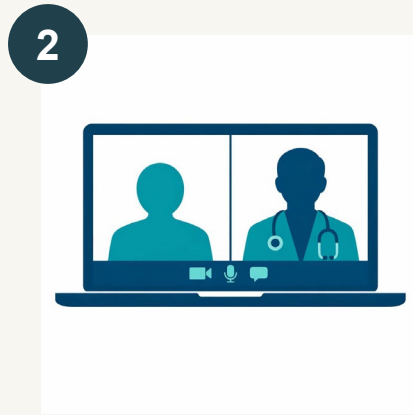
The next stage: “Click to Doorstep” operation

A streamlined operation driven by targeted digital marketing and telehealth partnerships



Discover

Targeted DTC ads via Meta, Google, PR and Email/SMS reach high-intent audiences



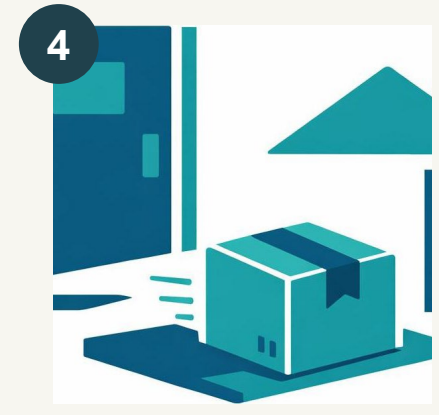
Consult

Telehealth intake form and virtual physician consultation for eligibility



Fulfillment

Physician approves prescription; order is processed and fulfilled



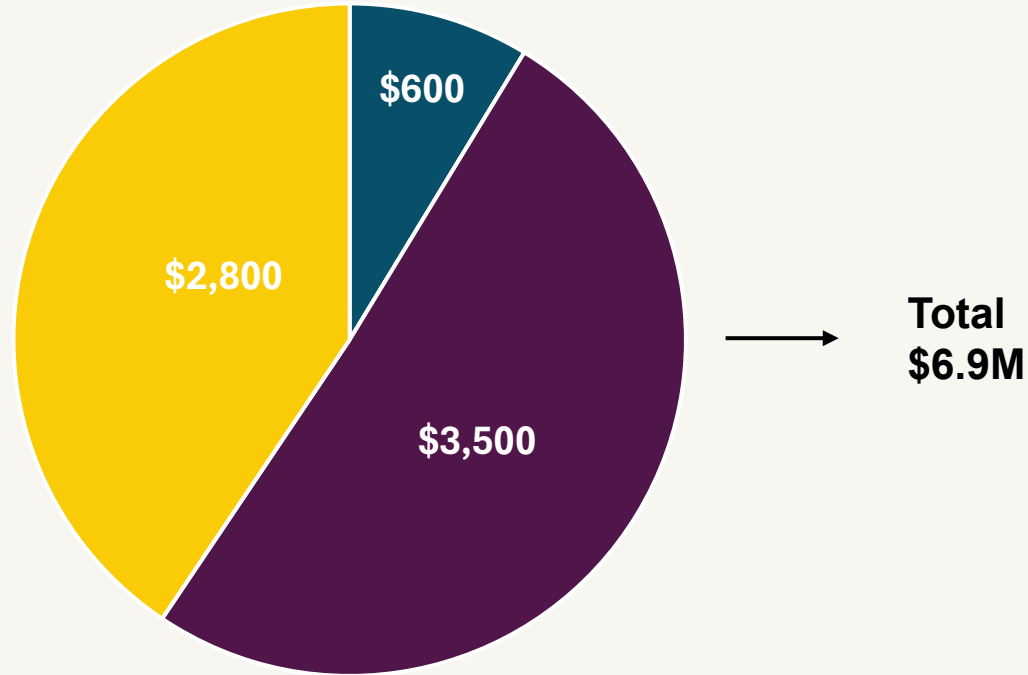
Deliver

Epitomee Capsule shipped directly to the patient's doorstep

Supplied orders and short-term binding orders for the next 12 months

Supplied orders and short-term binding orders (thousands \$)

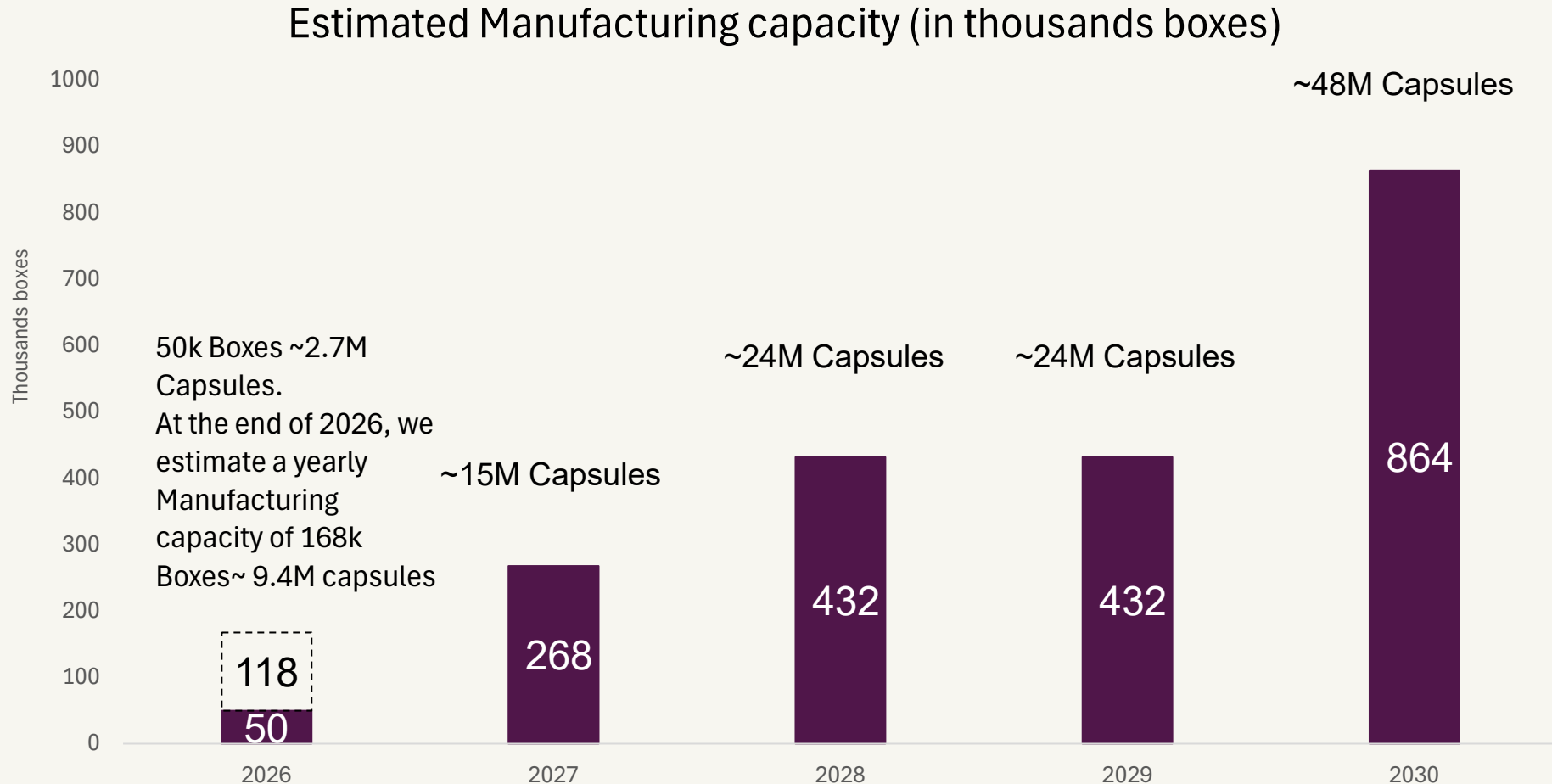
- Included supplied orders and Future binding orders
- Not including USA
- Not including any of the projections that are not binding



■ Supplied orders ■ short-term binding orders 2026 ■ short-term binding orders 2027

The "Binding Orders" presented herein represent contractual commitments received by the Company; however, they do not constitute guaranteed revenue. The conversion of these orders into actual cash flow is subject to various risks and uncertainties beyond the Company's control, including but not limited to: potential shipping delays, supply chain disruptions, regulatory hurdles in destination territories, customer liquidity, or contract defaults.

Estimated Manufacturing capacity : Scale-Up plan



Notice: Meeting the projected manufacturing volume requires additional Capex and production expansion, which are subject to funding availability. It is important to note that expanding manufacturing capacity may not necessarily result in proportional sales growth. Capacity and volume projections are based on current management estimates and are subject to change. Actual production output may vary significantly due to operational risks, supply chain fluctuations, technical constraints, or logistical disruptions. These figures represent targeted growth and do not constitute a guarantee of future manufacturing performance.

State-of-the-Art Production Process



Raw material



Thin film coating



Robotic assembly

Proprietary information of Epitomee Medical . Not to be reproduced or disclosed to others without prior written approval

Key Risks & Barriers at a Glance

Regulatory

- ⚠️ **Post-Market Compliance**
- ⚠️ **International Approvals**
- ⚠️ **Validation process of new machines**

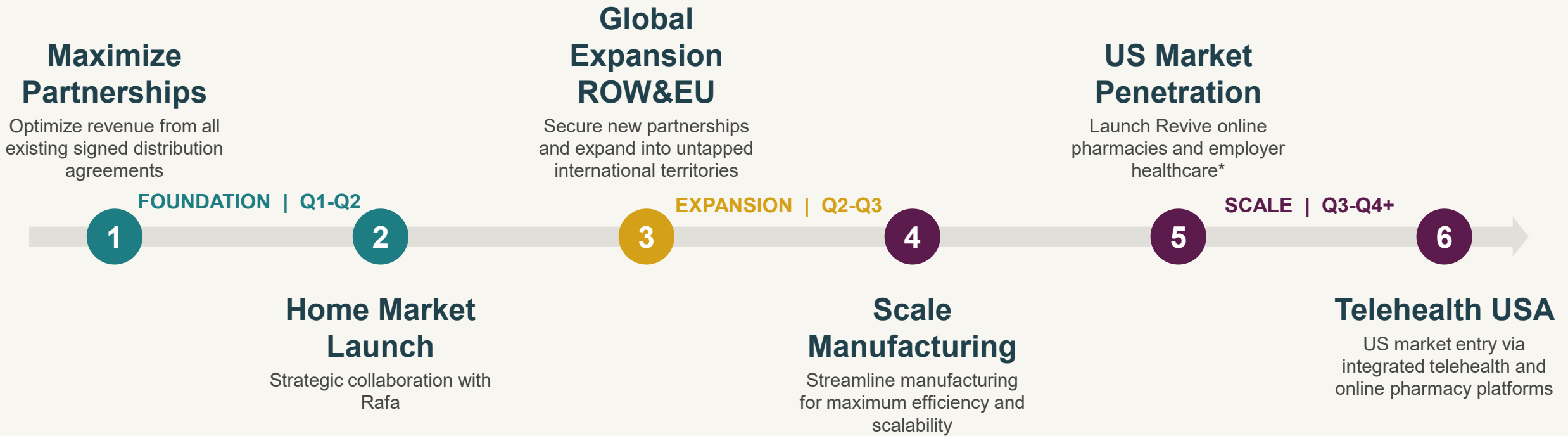
Market & Competitive

- ⚠️ **GLP-1 Oral Advances**
- ⚠️ **Pricing Uncertainty**
- ⚠️ **Physician Adoption**
- ⚠️ **DTC Marketing Costs**
- ⚠️ **Modest Efficacy vs. GLP-1**

Operational & Financial

- ⚠️ **Manufacturing Scale-Up**
- ⚠️ **Single-Facility Risk**
- ⚠️ **Capacity vs. Demand Gap**
- ⚠️ **Distributor Dependency**

2026 Milestones & Timeline



epitomee®

Thank you

